

ELGE MODEL A-11 NOZZLE SCHEDULE

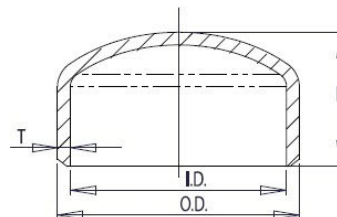
	Size	SERVICE	SCH	DESCRIPTION
A	2 "	SHELL CONNECTION STEAM INLET	40	SA-106 Steel pipe .125 tk
B	1 "	SHELL CONNECTION CONDENSATE OUTLET	40	3000# CPLG
C	1 1/2"	COIL CONNECTION WATER INLET	40	SA-106 Steel pipe .125 tk
D	1 1/2"	COIL CONNECTION WATER OUTLET	40	SA-106 Steel pipe .125 tk

DESIGN DATA

LOCATION	PRESSURE PSIG		TEMPERATURE ° F	
	DESIGN	TEST	DESIGN	TEST
SHELL	150	CODE	400	70
CORROSION ALLOWANCE			0.0625"	
MDMT	=	20° F (325psi)		

MATERIAL

SHELL	SA 53 GR E/B
HEAD	SA 414 GR,D
FLANGES	SA 105



WELD CAP DIMS

	O.D.	I.D.	T	H
SIZE 6	6.62	6.060	0.280	3.50

NOTES:

1	FABRICATED AND STAMPED IN ACCORDANCE WITH ASME CODE, SECTION VIII
2	NO RADIOGRAPHY
3	NO PHWT
4	PAINT: ONE COAT KEM HI-TEMP HEAT FLEX II 450 (GREY)

ELGE®

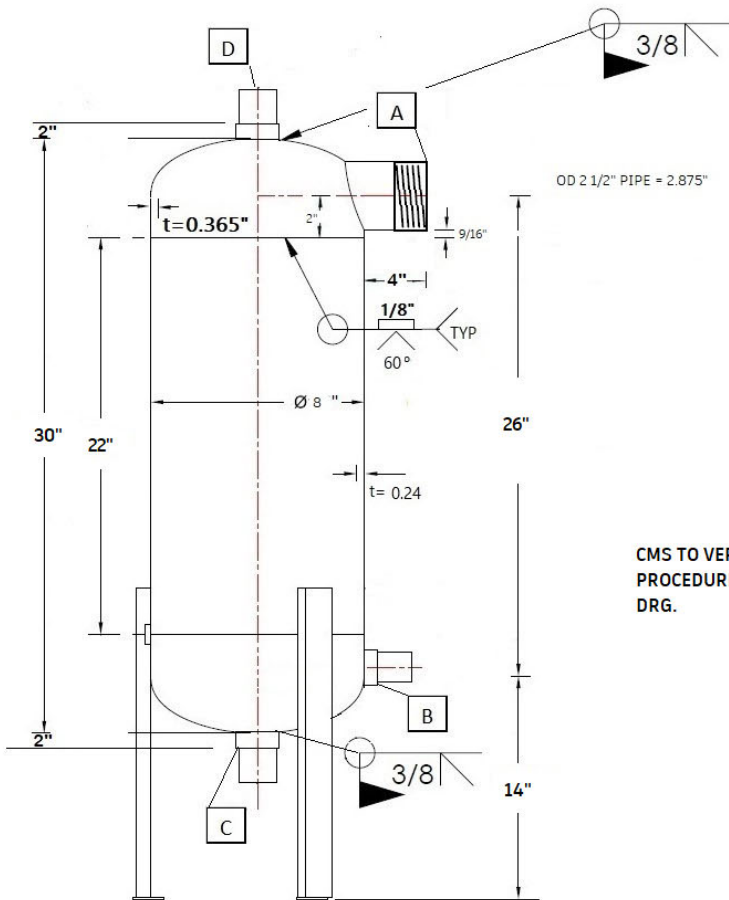
Shell and Coil Heat Exchanger

DRG NO. MODEL A-11 HEAT EXCHANGER

CMS JOB No 3227

REV 1

CUSTOMER: DGS Harrisburg PA



CMS TO VERIFY WELD PROCEDURES NOTED ON DRG.

NOZZLE SCHEDULE

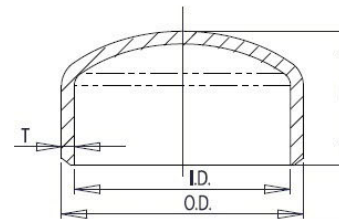
	Size	SERVICE	SCH	DESCRIPTION
A	2 1/2"	SHELL CONNECTION STEAM INLET	40	SA-106 Steel pipe .125 tk
B	1 1/4"	SHELL CONNECTION CONDENSATE OUTLET	40	#3000 CPLG
C	2"	COIL CONNECTION WATER INLET	40	SA-106 Steel pipe .125 tk
D	2"	COIL CONNECTION WATER OUTLET	40	SA-106 Steel pipe .125 tk

DESIGN DATA

LOCATION	PRESSURE PSIG		TEMPERATURE °F	
	DESIGN	TEST	DESIGN	TEST
SHELL	150	CODE	400	70
CORROSION ALLOWANCE			0.0625"	
MDMT	=	20° F	(325psi)	

MATERIAL

SHELL	SA 53 GR E/B
HEAD	SA 414 GR,D
FLANGES	SA 105



WELD CAP DIMS	O.D.	I.D.	T	H
8	8.62	7.976	0.322	4.00

ELGE®

Shell and Coil Heat Exchanger

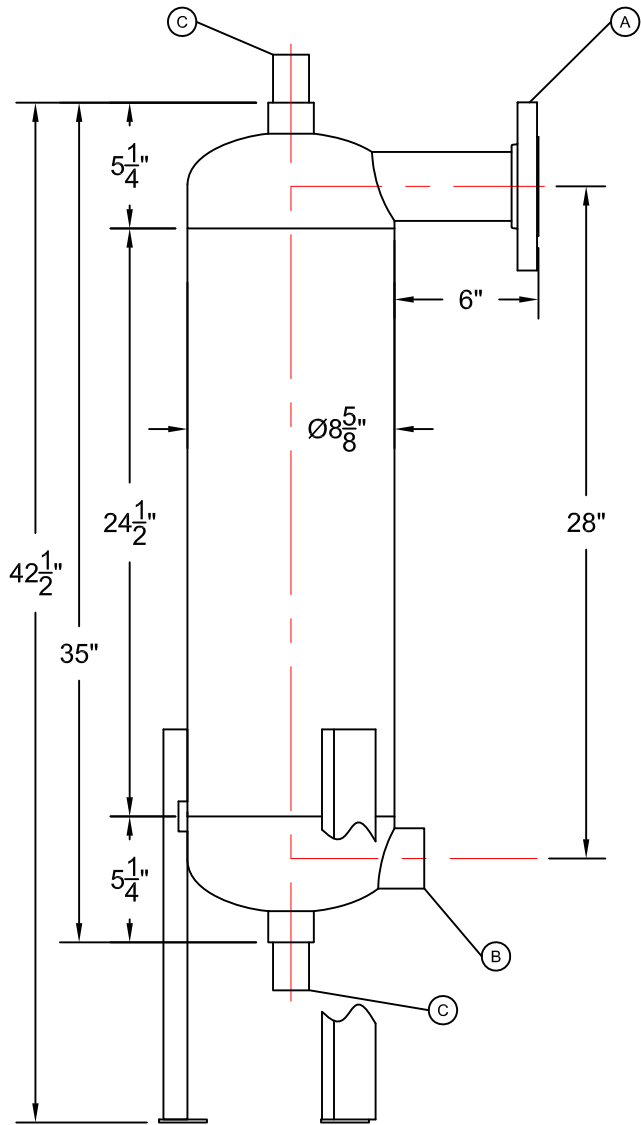
DRG NO. MODEL A 41 HEAT EXCHANGER

CMS JOB No 3227

REV 4

CUSTOMER: DGS Harrisburg PA

- NOTES:
- FABRICATED AND STAMPED IN ACCORDANCE WITH ASME CODE, SECTION VIII
 - NO RADIOGRAPHY
 - NO PHWT
 - PAINT: ONE COAT KEM HI-TEMP HEAT FLEX II 450 (GREY)



NOTES:

- FABRICATED AND STAMPED IN ACCORDANCE WITH ASME CODE, SECTION VIII, LAST EDITION

APPROVED	
Company:	_____
Approved by:	_____
	Name

	Signature
Date:	_____

MATERIAL

SHELL	SA 53 GR E/B
HEAD	SA 414 GR.D
FLANGES	SA 105

DESIGN DATA

LOCATION	PRESSURE, PSIG		TEMPERATURE, F	
	DESIGN	TEST	DESIGN	TEST
SHELL	200	PER CODE	400	70

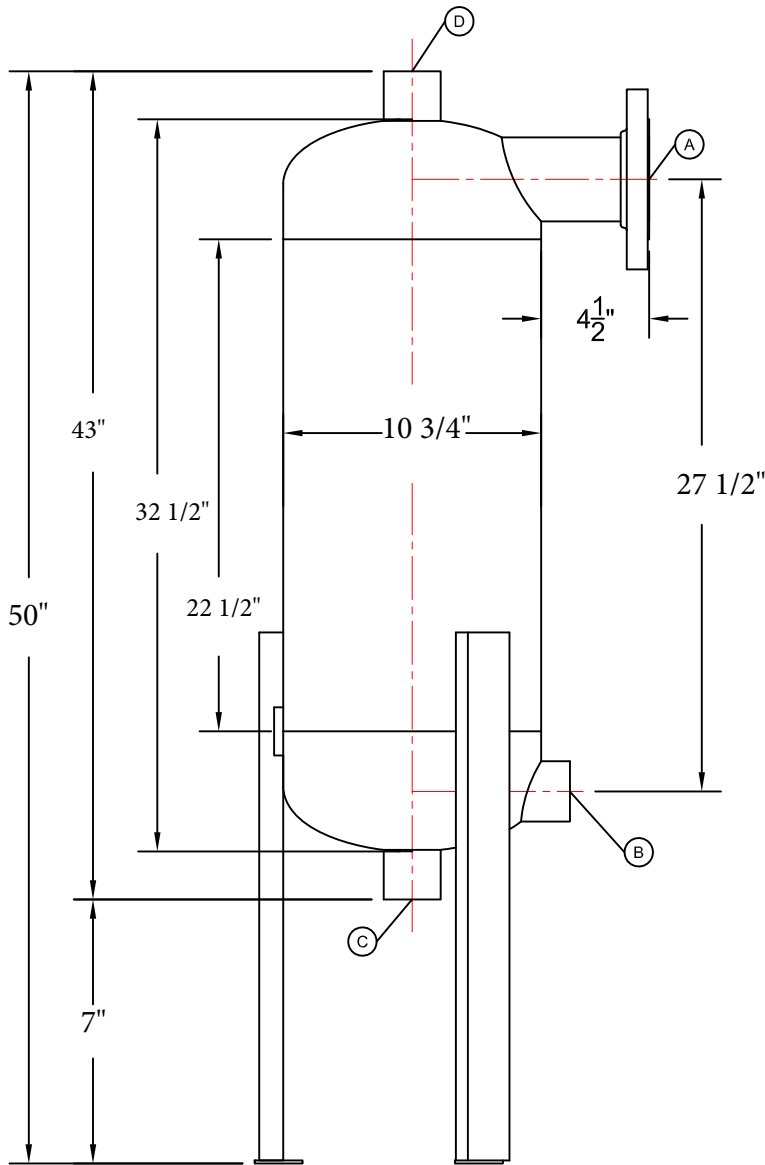
NOZZLE

	SIZE	SERVICE	DESCRIPTION
A	2-1/2"	SHELL INLET	150# RF.SO.
B	1-1/2"	SHELL OUTLET	3000# NPT
C	1-1/2"	COIL CONNECTIONS	COPPER TUBE "L"

DRAWN BY				
QUALITY CONTROL				
THIS DOCUMENT CONTAINS CONFIDENTIAL INFORMATION WHICH IS THE PROPERTY OF ELGE TECHNOLOGIES THIS DOCUMENT MAY NOT BE REPRODUCED, TRANSFERRED OR USED, OR ITS CONTENTS DISCLOSED, WITHOUT THE WRITTEN PERMISSION OF THE OWNER.				
	SIZE A	SERIAL NO	DWG NO.	REV 0
	SCALE 1:8		SHEET #1	

APPROVED

Company: _____
 Approved by: _____
 Name _____
 Signature _____
 Date: _____



DESIGN DATA

LOCATION	PRESSURE, PSIG		TEMPERATURE, F°	
	DESIGN	TEST	DESIGN	TEST
SHELL	200	PER CODE	400	70

NOZZLE

	SIZE	SERVICE	DESCRIPTION
(A)	3"	STEAM INLET	150# RF.SO.
(B)	2"	CONDENSATE OUTLET	3000# NPT
(C)	2"	WATER INLET	PIPE STD
(D)	2"	WATER OUTLET	PIPE STD

MATERIAL

SHELL	SA 53 GR E/B
HEAD	SA 234 WPB
FLANGES	SA 105

NOTES:

- FABRICATED AND STAMPED IN ACCORDANCE WITH ASME CODE, SECTION VIII, LAST EDITION

DRAWN BY FS	
CHECK BY P.L.	
QUALITY CONTROL P.L.	

ELGE®
Shell and Coil Heat Exchanger

THIS DOCUMENT CONTAINS CONFIDENTIAL INFORMATION WHICH IS THE PROPERTY OF ELGE TECHNOLOGIES THIS DOCUMENT MAY NOT BE REPRODUCED, TRANSFERRED OR USED, OR ITS CONTENTS DISCLOSED, WITHOUT THE WRITTEN PERMISSION OF THE OWNER.

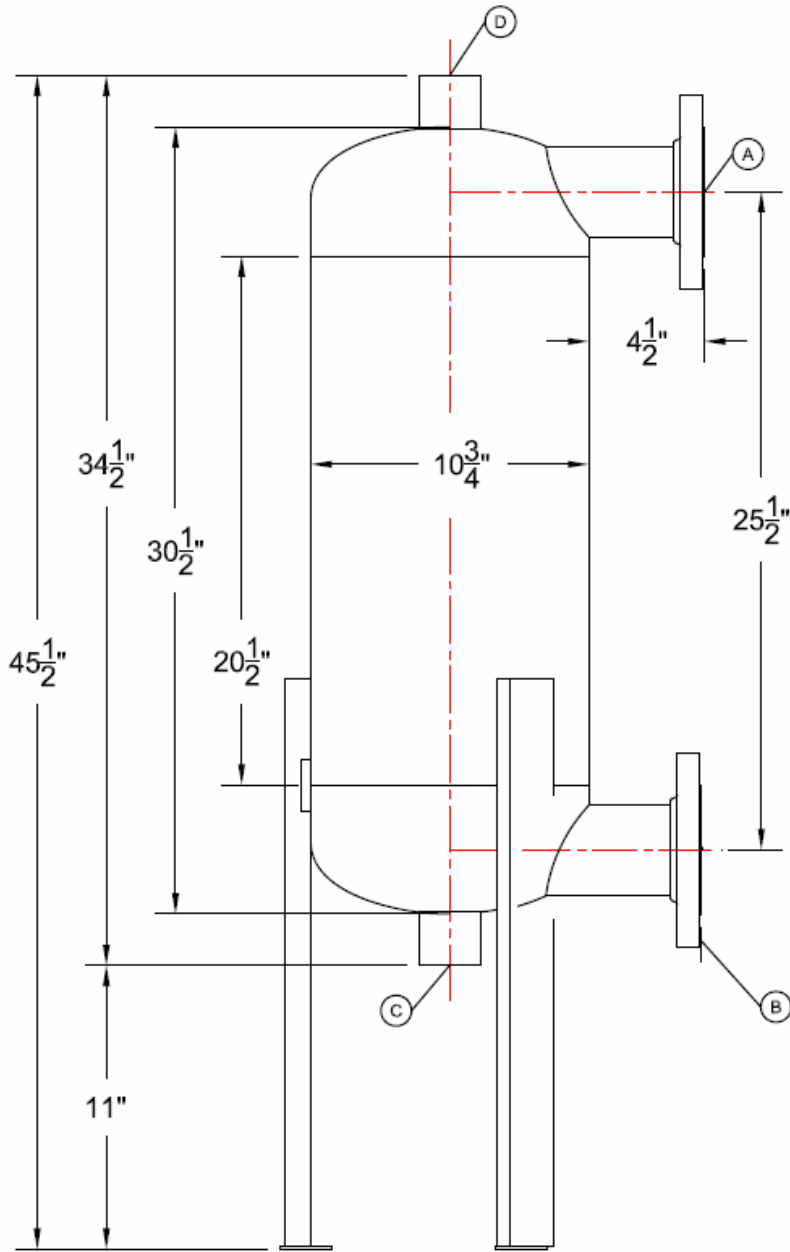
MODEL A-51

SIZE A	SERIAL NO XXXXX	DWG NO. 51-GEN	REV 0
SCALE 1:8		SHEET #1	

APPROVED

Company: _____
 Approved by: _____
Name

 Signature
 Date: _____



DESIGN DATA

LOCATION	PRESSURE, PSIG		TEMPERATURE, F°	
	DESIGN	TEST	DESIGN	TEST
SHELL	200	PER CODE	400	70

NOZZLE

	SIZE	SERVICE	DESCRIPTION
(A)	3"	WATER INLET	150# RF.SO.
(B)	3"	WATER OUTLET	150# RF.SO.
(C)	2"	WATER INLET	PIPE STD
(D)	2"	WATER OUTLET	PIPE STD

MATERIAL

SHELL	SA 53 GR E/B
HEAD	SA 234 WPB
FLANGES	SA 105

NOTES:

- FABRICATED AND STAMPED IN ACCORDANCE WITH ASME CODE, SECTION VIII, LAST EDITION

DRAWN BY	RS
CHECKED BY:	DP
QUALITY CONTROL	P.L.



THIS DOCUMENT CONTAINS CONFIDENTIAL INFORMATION WHICH IS THE PROPERTY OF ELGE TECHNOLOGIES THIS DOCUMENT MAY NOT BE REPRODUCED, TRANSFERRED OR USED, OR ITS CONTENTS DISCLOSED, WITHOUT THE WRITTEN PERMISSION OF THE OWNER.

AR-61
GENERAL

CUSTOMER/JOB NAME:
**STANDARD/
ROCKINGHAM COUNTY**

SIZE A	SERIAL NO	DWG NO. AR-61	REV 0
SCALE 1:8		SHEET #1	

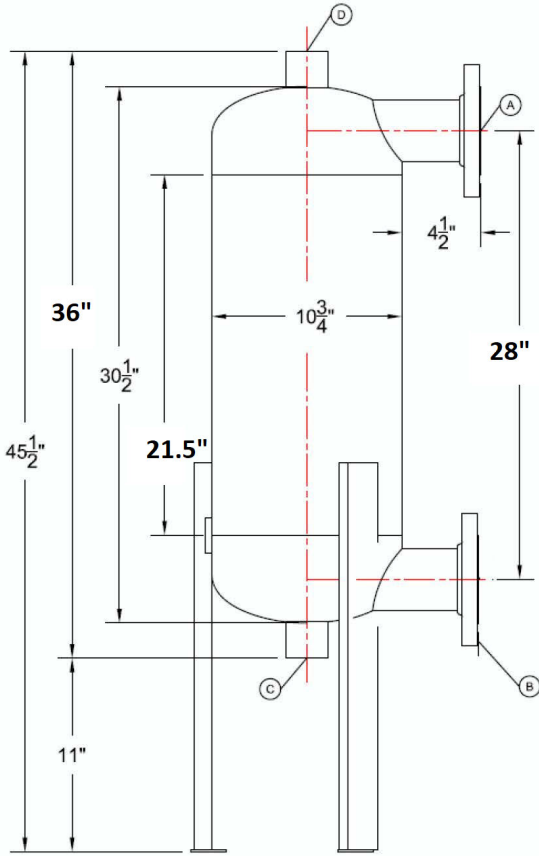
APPROVED

Company: _____

Approved by: _____
Name

Signature _____

Date: _____



3" NOZZLE OD = 3.5
14" WELD CAP = 6.5" DEEP

DESIGN DATA

LOCATION	PRESSURE, PSIG		TEMPERATURE, F°	
	DESIGN	TEST	DESIGN	TEST
SHELL	200	PER CODE	400	70

NOZZLE

	SIZE	SERVICE	DESCRIPTION
A	3"	WATER INLET	150# RF.SO.
B	3"	WATER OUTLET	150# RF.SO.
C	2"	WATER INLET	PIPE STD
D	2"	WATER OUTLET	PIPE STD

MATERIAL

SHELL	SA 53 GR E/B
HEAD	SA 234 WPB
FLANGES	SA 105

NOTES:

- 1. FABRICATED AND STAMPED IN ACCORDANCE WITH ASME CODE, SECTION VIII, LAST EDITION

DRAWN BY	RS
CHECKED BY:	DP
QUALITY CONTROL	P.L.



THIS DOCUMENT CONTAINS CONFIDENTIAL INFORMATION WHICH IS THE PROPERTY OF ELGE TECHNOLOGIES. THIS DOCUMENT MAY NOT BE REPRODUCED, TRANSMITTED OR LENT, OR ITS CONTENTS DISCLOSED, WITHOUT THE WRITTEN PERMISSION OF THE OWNER.

AR-61
GENERAL

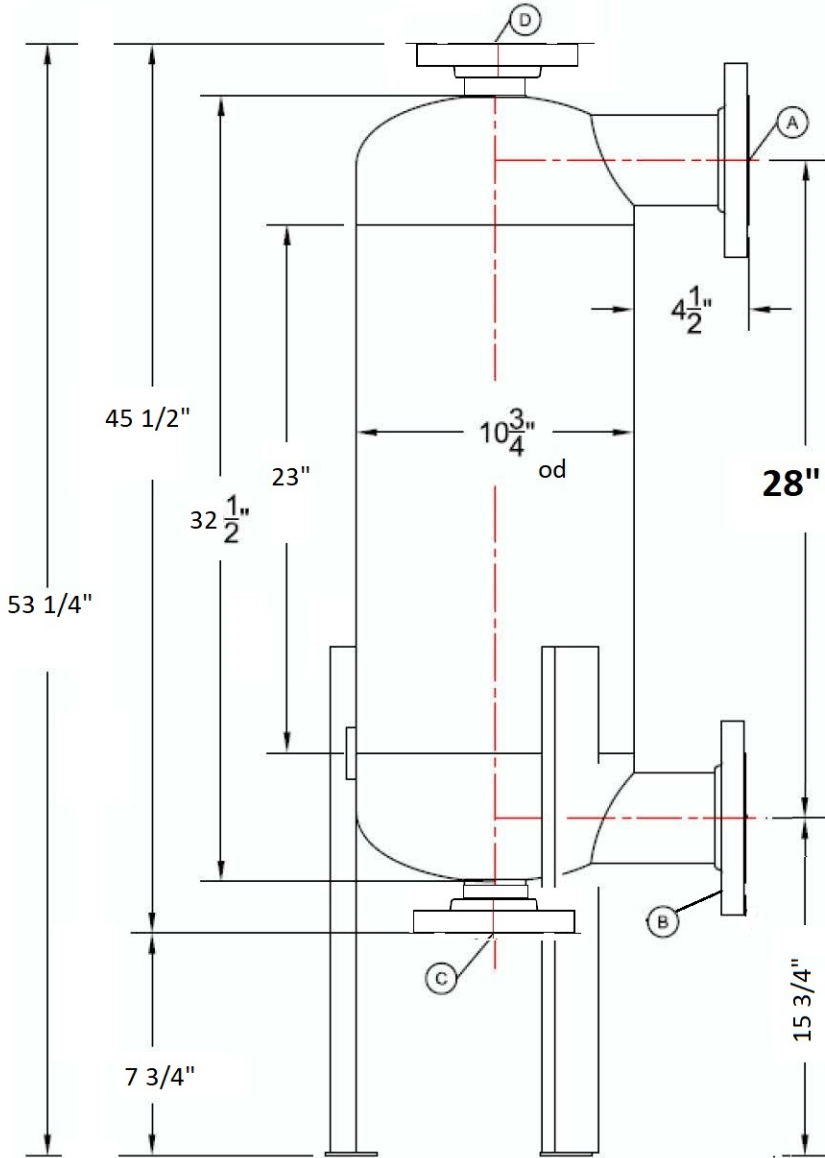
CUSTOMER/JOB NAME:	SIZE A	SERIAL NO	DWG NO.	REV
STANDARD/ ROCKINGHAM COUNTY	SCALE 1:8		AR-61	1
			SHEET #1	

APPROVED

Company: _____
 Approved by: _____
Name

 Signature

Date: _____



3" NOZZLE OD = 3.5

DESIGN DATA

LOCATION	PRESSURE, PSIG		TEMPERATURE, F°	
	DESIGN	TEST	DESIGN	TEST
SHELL	200	PER CODE	400	70

NOZZLE

	SIZE	SERVICE	DESCRIPTION
A	3"	WATER INLET	#300 RF SO
B	3"	WATER OUTLET	#300 RF SO
C	2"	WATER INLET	#300 RF SO
D	2"	WATER OUTLET	#300 RF SO

MATERIAL

SHELL	SA 53 GR E/B
HEAD	SA 234 WPB
FLANGES	SA 105

NOTES:

- FABRICATED AND STAMPED IN ACCORDANCE WITH ASME CODE, SECTION VIII, LAST EDITION

DRAWN BY	DP
CHECKED BY:	
QUALITY CONTROL	
P.L.	



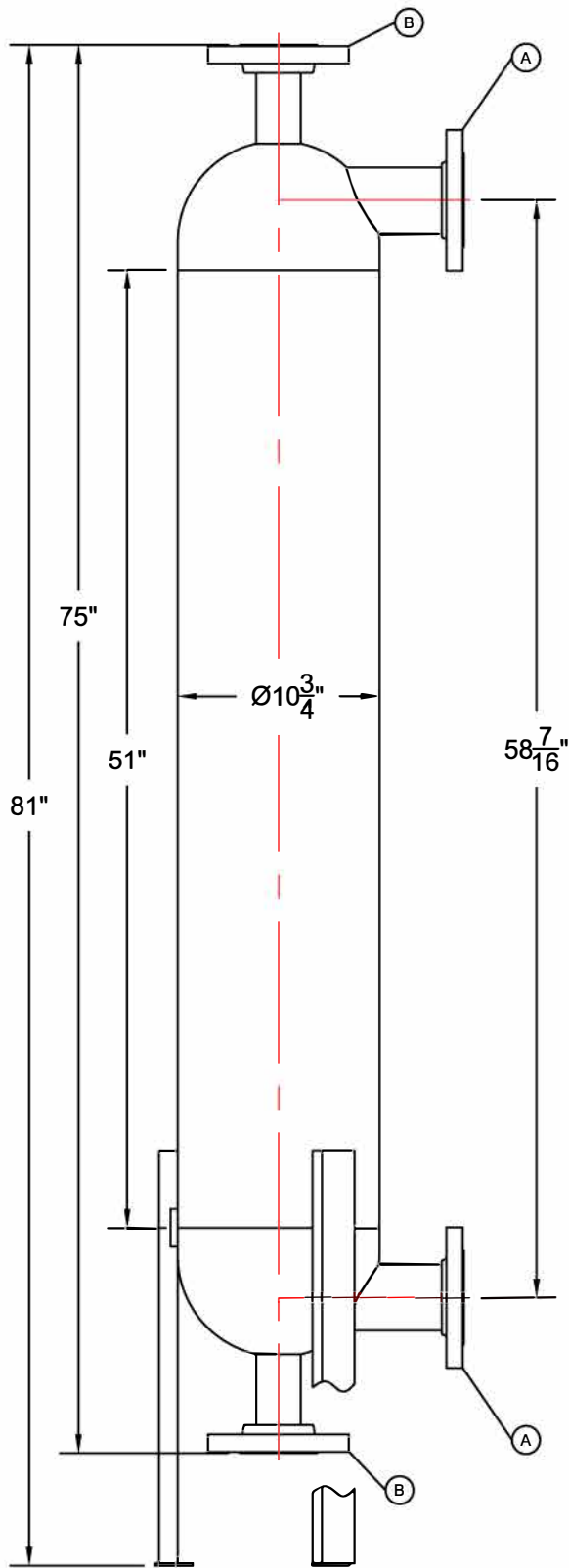
THIS DOCUMENT CONTAINS CONFIDENTIAL INFORMATION WHICH IS THE PROPERTY OF ELGE TECHNOLOGIES. THIS DOCUMENT MAY NOT BE REPRODUCED, TRANSFERRED OR USED, OR ITS CONTENTS DISCLOSED, WITHOUT THE WRITTEN PERMISSION OF THE OWNER.

AR-61
GENERAL

CUSTOMER/JOB NAME:	GILBERT ST PAUL
--------------------	-----------------

SIZE	SERIAL NO	DWG NO.	REV
A		AR-61	1

SCALE 1:8	SHEET #1
-----------	----------



NOTES:

- 1. FABRICATED AND STAMPED IN ACCORDANCE WITH ASME CODE, SECTION VIII, LAST EDITION

APPROVED	
Company:	_____
Approved by:	_____ Name
	_____ Signature
Date:	_____

MATERIAL

SHELL	SA 53 GR E/B
HEAD	SA 414 GR.D
FLANGES	SA 105

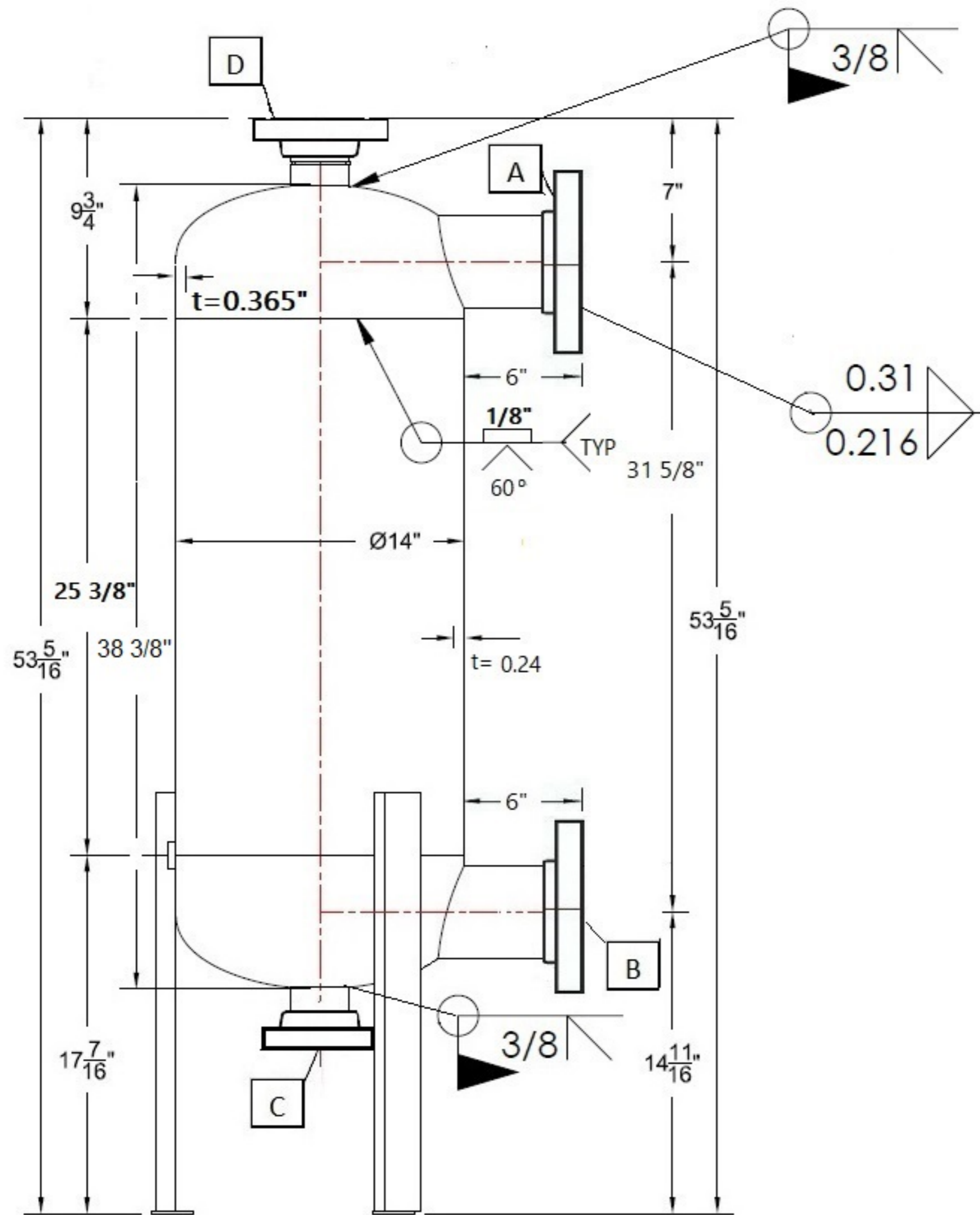
DESIGN DATA

LOCATION	PRESSURE, PSIG		TEMPERATURE, F°	
	DESIGN	TEST	DESIGN	TEST
SHELL	200	PER CODE	400	70

NOZZLE

	SIZE	SERVICE	DESCRIPTION
(A)	3"	SHELL CONNECTIONS	150# RF.SO.
(B)	2-1/2"	COIL CONNECTIONS	300# RF.SO.

DRAWN BY R.S.				
CHECK BY A.F.				
QUALITY CONTROL G.M.				
MULCAHY		AR-66 GENERAL		
	SIZE A	SERIAL NO 75524	DWG NO. AR-66_75524	REV 1
SCALE 1:10		08/01/2012	SHEET #1	



NOZZLE

	SIZE	SERVICE	SCH	DESCRIPTION
A	4"	SHELL CONNECTION WATER INLET	40	#300 RF SO FLANGE
B	4"	SHELL CONNECTION WATER OUTLET	40	#300 RF SO FLANGE
C	2.5"	COIL CONNECTION WATER INLET	40	#300 RF SO FLANGE
D	2.5"	COIL CONNECTION WATER OUTLET	40	#300 RF SO FLANGE

DESIGN DATA

LOCATION	PRESSURE PSIG		TEMPERATURE °F	
	DESIGN	TEST	DESIGN	TEST
SHELL	325	CODE	400	70
CORROSION ALLOWANCE			0.0625"	
MDMT	=	20° F	(325psi)	

APPROVED

Company: _____
 Approved by: _____
 Name

 Signature
 Date: _____

NOTES:

1	FABRICATED AND STAMPED IN ACCORDANCE WITH ASME CODE, SECTION VIII
2	NO RADIOGRAPHY
3	NO PHWT
4	PAINT: ONE COAT KEM HI-TEMP HEAT FLEX II 450 (GREY)

ELGE®

Shell and Coil Heat Exchanger

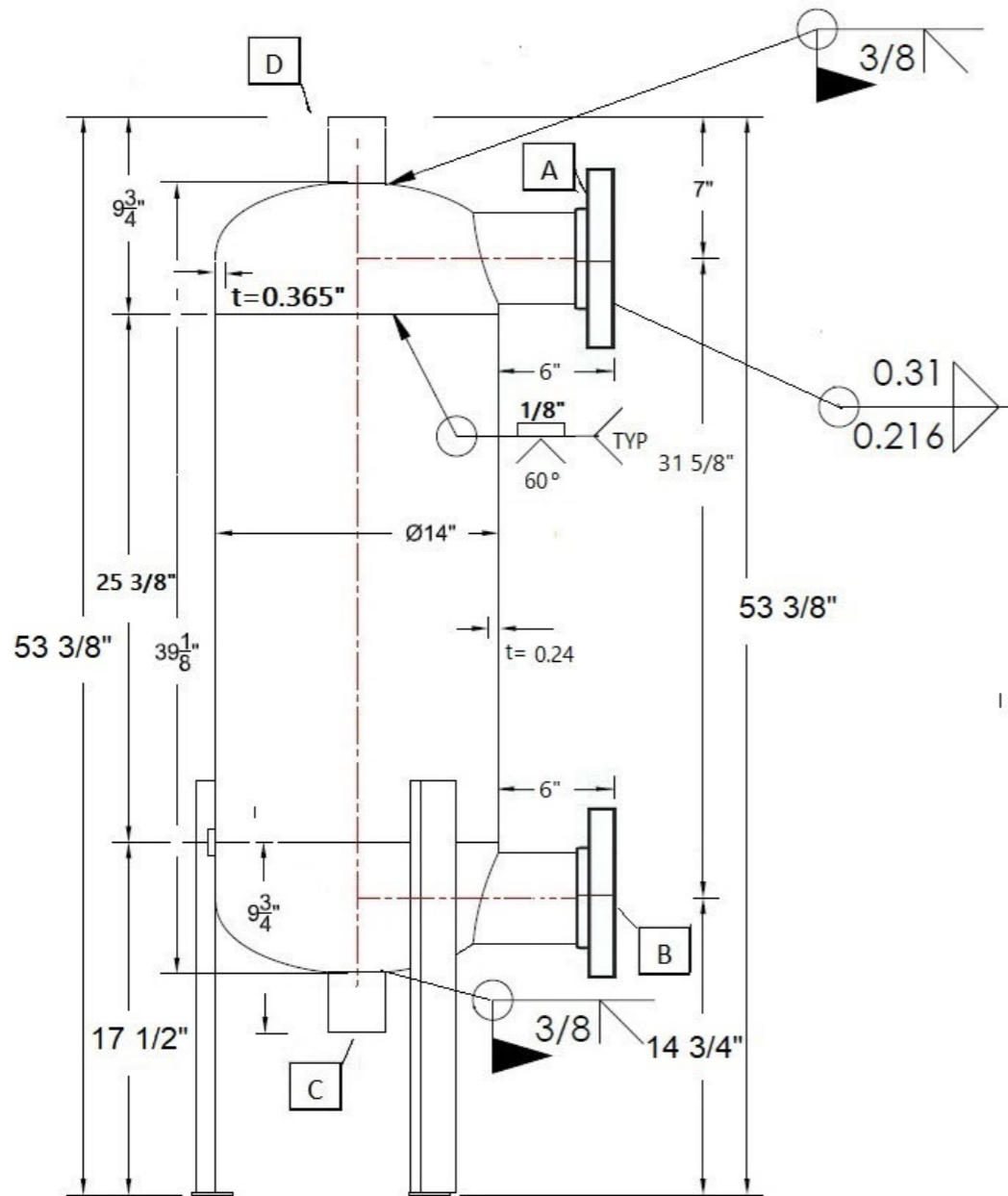
MODEL AR-71 ELGE HEAT EXCHANGER

DRG NO. AR-71-WW-300

REV 3

CUSTOMER:

Dated:
1-6-22



NOZZLE

	SIZE	SERVICE	SCH	DESCRIPTION
A	4"	SHELL CONNECTION WATER INLET	40	#150 RF SO FLANGE
B	4"	SHELL CONNECTION WATER OUTLET	40	#150 RF SO FLANGE
C	2.5"	COIL CONNECTION WATER INLET	40	SCH 40 PIPE
D	2.5"	COIL CONNECTION WATER OUTLET	40	SCH 40 PIPE

DESIGN DATA

LOCATION	PRESSURE PSIG		TEMPERATURE °F	
	DESIGN	TEST	DESIGN	TEST
SHELL	325	CODE	400	70
CORROSION ALLOWANCE			0.0625"	
MDMT	=	20° F	(325psi)	

APPROVED

Company: _____
 Approved by: _____
 Name

 Signature
 Date: _____

NOTES:

1	FABRICATED AND STAMPED IN ACCORDANCE WITH ASME CODE, SECTION VIII
2	NO RADIOGRAPHY
3	NO PHWT
4	PAINT: ONE COAT KEM HI-TEMP HEAT FLEX II 450 (GREY)



Shell and Coil Heat Exchanger

MODEL A-71 ELGE HEAT EXCHANGER

DRG NO.

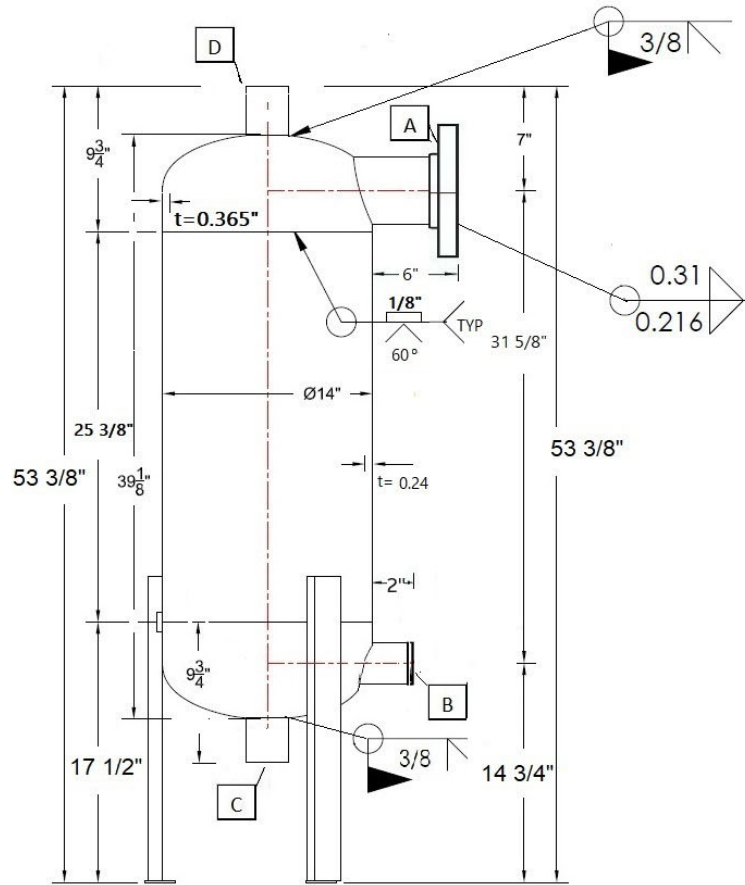
CMS#

REV

0

CUSTOMER:

TRUMP VILLAGE



NOZZLE

	SIZE	SERVICE	SCH	DESCRIPTION
A	4"	SHELL CONNECTION	40	#150 RF SO FLANGE
B	2 1/2"	SHELL CONNECTION	40	STEEL COUPLING
C	2 1/2"	COIL CONNECTION WATER INLET		.125 CARBON SLEEVE
D	2 1/2"	COIL CONNECTION WATER OUTLET		.125 CARBON SLEEVE

DESIGN DATA

LOCATION	PRESSURE PSIG		TEMPERATURE °F	
	DESIGN	TEST	DESIGN	TEST
SHELL	150	CODE	400	70
CORROSION ALLOWANCE			0.0625"	
MDMT	=	20° F	(325psi)	

APPROVED

Company: _____
 Approved by: _____
Name

Signature

Date: _____

NOTES:

1	FABRICATED AND STAMPED IN ACCORDANCE WITH ASME CODE, SECTION VIII
2	NO RADIOGRAPHY
3	NO PHWT
4	PAINT: ONE COAT KEM HI-TEMP HEAT FLEX II 450 (GREY)

ELGE®

Shell and Coil Heat Exchanger

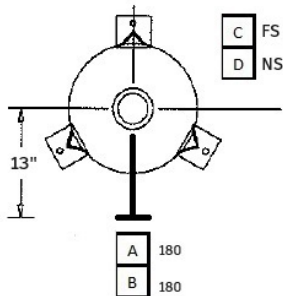
ELGE MODEL A81-150-SF4C2.5-SL

DRG NO.	A81-150-SF4C2.5-SL	CMS#	REV
CUSTOMER:			TRUMP VILLAGE
			2

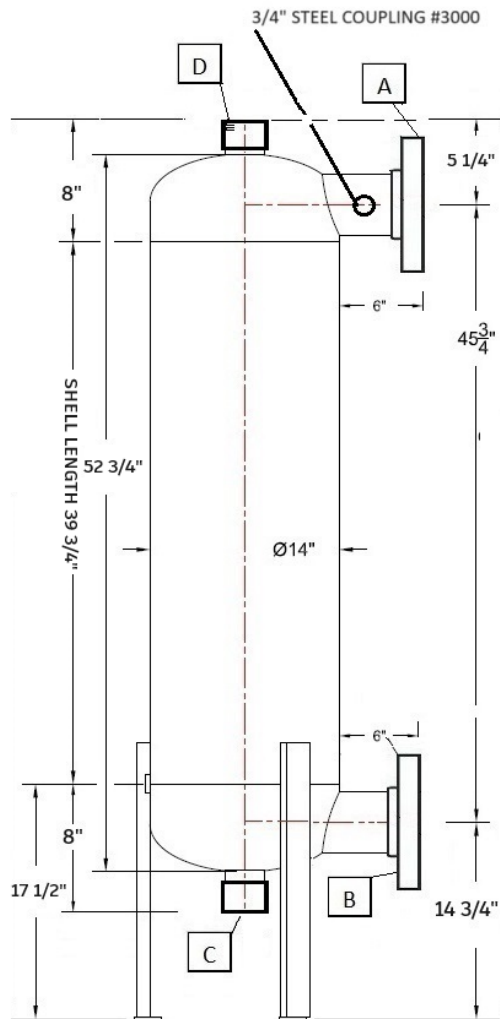
SERVICE	Size	DESCRIPTION
A	4"	RF WN Flange #300
B	4"	RF WN Flange #300
C	2 1/2"	HALF CPLG SOCKET WELD
D	2 1/2"	HALF CPLG SOCKET WELD

DESIGN DATA

LOCATION	PRESSURE, PSIG		TEMPERATURE, °F	
	DESIGN	TEST	DESIGN	TEST
SHELL	325	PER CODE	400	70



TOP VIEW



APPROVED

Company: _____
 Approved by: _____ Name _____
 _____ Signature _____
 Date: _____

MATERIAL

SHELL	SA 53 GR E/B
HEAD	SA 234 WPB
FLANGES	SA 105

NOTES:

- FABRICATED AND STAMPED IN ACCORDANCE WITH ASME CODE, SECTION VIII, LAST EDITION

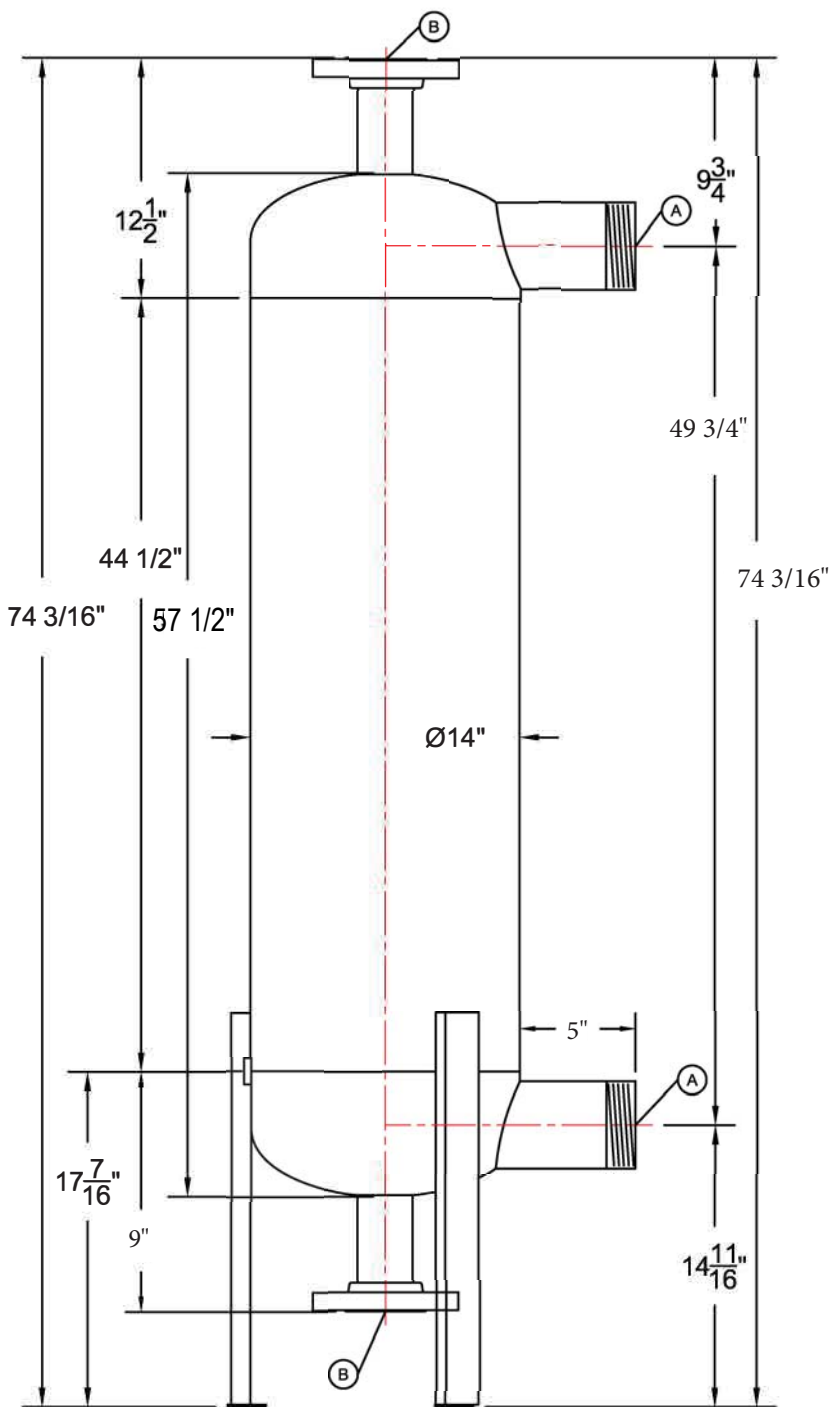
ELGE®

Shell and Coil Heat Exchanger

DRG NO. MODEL A-84 STEAM IN COIL

CUSTOMER: STREETS, OK

REV: 4



APPROVED	
Company: _____	
Approved by: _____	Name
Signature _____	
Date: _____	

NOTE:
PLEASE PROVIDE AND INSTALL
(2) #150 RF SO FLANGES
FOR THREADED NOZZLES "A"

NOTES:

- FABRICATED AND STAMPED
IN ACCORDANCE WITH ASME CODE, SECTION VIII,
LAST EDITION

DESIGN DATA

LOCATION	PRESSURE, PSIG		TEMPERATURE, F°	
	DESIGN	TEST	DESIGN	TEST
SHELL	250	PER CODE	400	70

MATERIAL

SHELL	SA 53 GR E/B
HEAD	SA 234 WPB
FLANGES	SA 105

NOZZLE

	SIZE	SERVICE	DESCRIPTION
(A)	4"	SHELL CONNECTIONS	PIPE STD TREADED
(B)	2-1/2"	COIL CONNECTIONS	300# RF.SO.

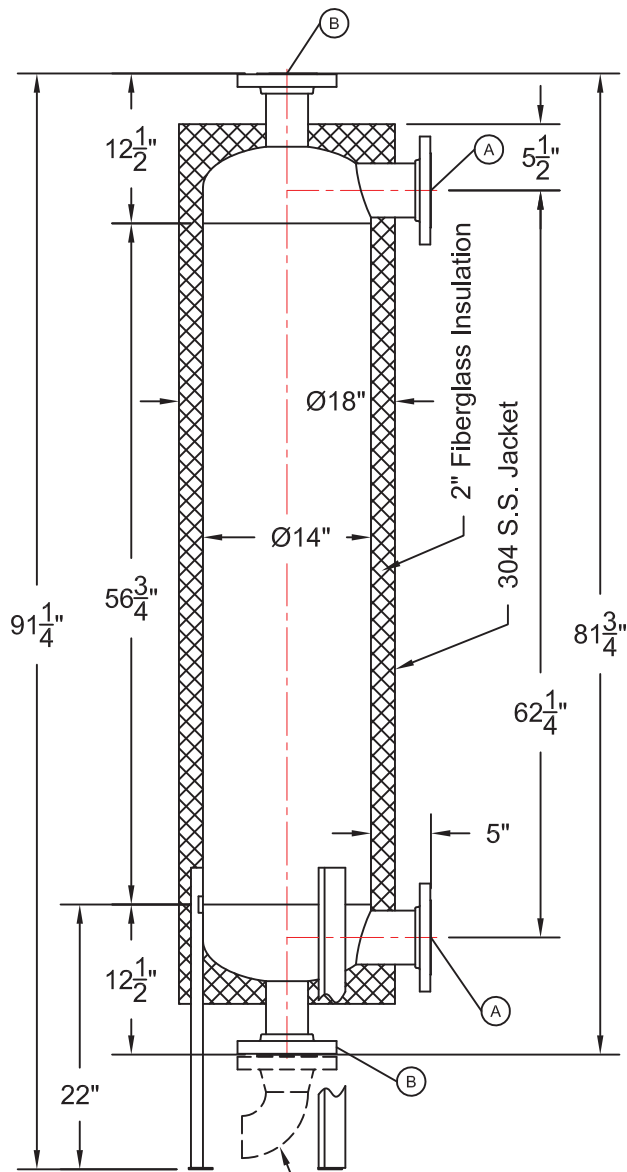
DRAWN	RS	
QUALITY CONTROL	P.L.	

ELGE TECHNOLOGIES L.L.C.

THIS DOCUMENT CONTAINS CONFIDENTIAL INFORMATION WHICH IS THE PROPERTY OF ELGE TECHNOLOGIES THIS DOCUMENT MAY NOT BE REPRODUCED, TRANSFERRED OR USED, OR ITS CONTENTS DISCLOSED, WITHOUT THE WRITTEN PERMISSION OF THE OWNER.

AR-85-250
GENERAL

SIZE A	SERIAL NO.	DWG NO. AR-85-250-G	REV 3
SCALE 1:10		SHEET #1	



L.R. ELL & W.N. FLANGE
SHOWN FOR
REFERENCE ONLY

NOTES:

- FABRICATED AND STAMPED
IN ACCORDANCE WITH ASME CODE, SECTION VIII,
LAST EDITION

APPROVED	
Company:	_____
Approved by:	_____
	Name

	Signature
Date:	_____

MATERIAL

SHELL	SA 53 GR E/B
HEAD	SA 414 GR.D
FLANGES	SA 105

DESIGN DATA

LOCATION	PRESSURE, PSIG		TEMPERATURE, F°	
	DESIGN	TEST	DESIGN	TEST
SHELL	200	PER CODE	400	70

NOZZLE

	SIZE	SERVICE	DESCRIPTION
(A)	4"	SHELL CONNECTIONS	150# RF.SO.
(B)	2-1/2"	COIL CONNECTIONS	300# RF.SO.

DRAWN BY RS		ELGE®		
QUALITY CONTROL P.L.		<i>Shell and Coil Heat Exchanger</i>		
		AR-86 GENERAL		
	SIZE A	SERIAL NO	DWG NO. AR-86	REV 2
	SCALE 1:16			SHEET #1