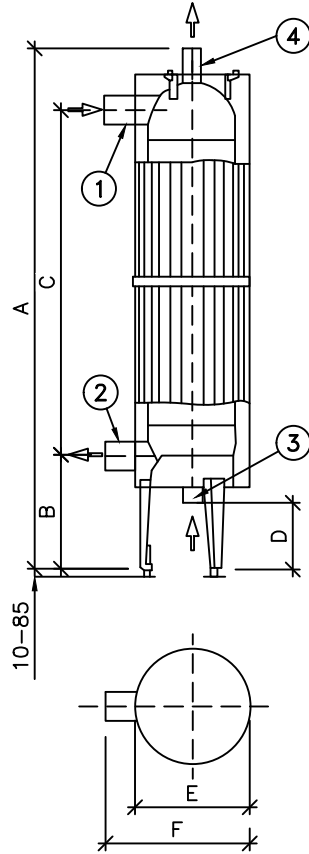


DIMENSIONS - DUPLEX ARRANGEMENT					
MODEL	A	B	C	D	E
MAC2-A-11	36"	30"	37.75"	43.5"	53.5"

ELGE
Shell and Coil Heat Exchanger

ELGE MODEL A SERIES DIMENSION DATA

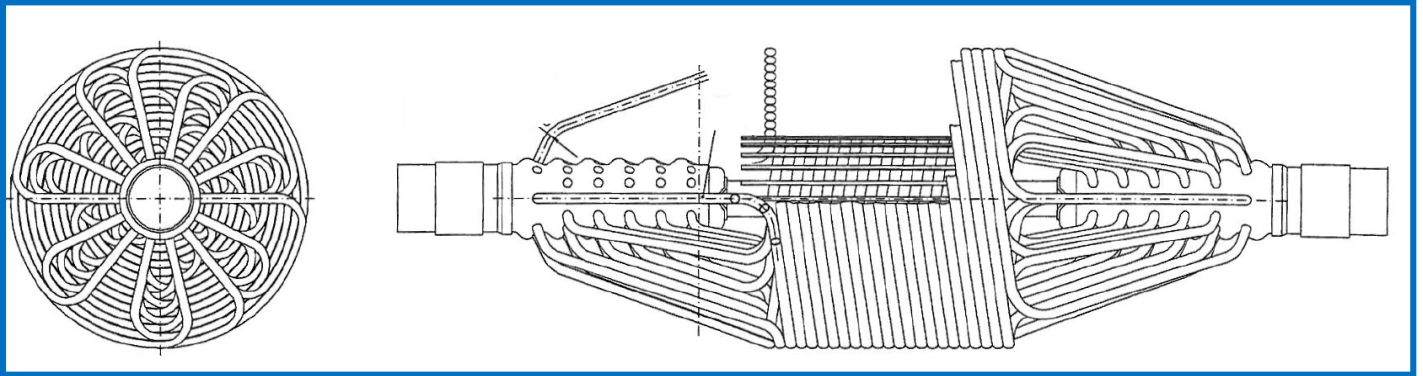


1. Steam Supply
2. Condensate Return
3. Cold Water
4. Domestic Hot Water

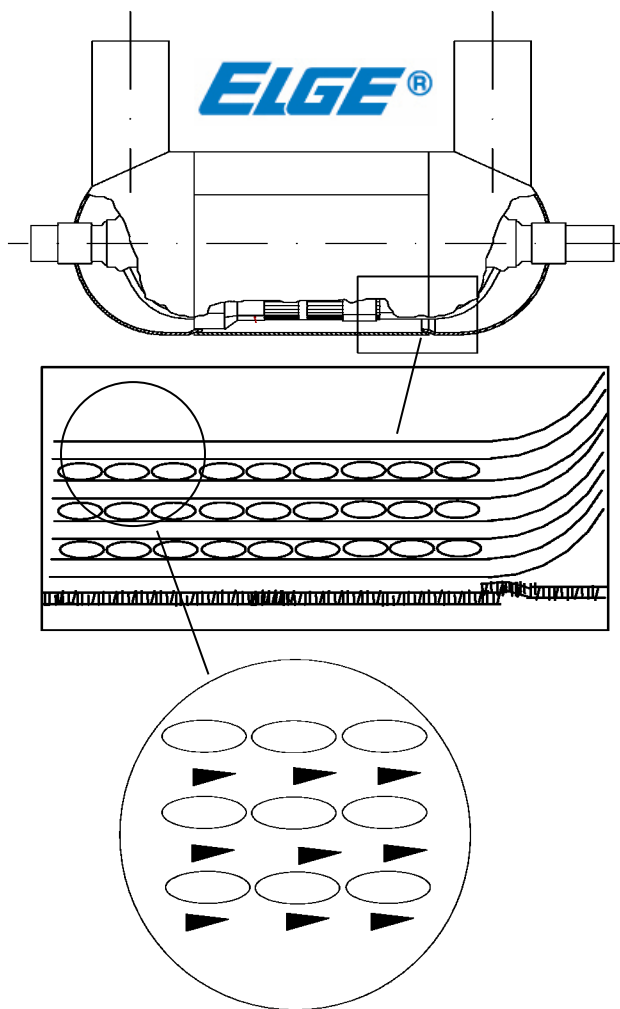
MODEL	dimensions (inch)						Weight lb	CONNECTIONS		VOLUME US Gal.			
	A	B	C	D	E	F		1 inch	2 inch	3 inch	4 inch	Shell	Coil
A-11	43.5	11.0	26.7	7.7	10.0	17.7	77	2		1		2.6	0.8

ELGE
Shell and Coil Heat Exchanger

Elge Instantaneous Hot Water Heaters—Why they work best



Even, Controlled Flow: When the copper is coiled, it is molded to a oval shape to yield a larger heat transfer area and spacers are inserted between the rows. Hot water or steam enters the head and is diverted through the coil bundle in a counter/cross-flow manner. The inner casing ensures even and controlled flow over the exterior of the tubes in the bundle.

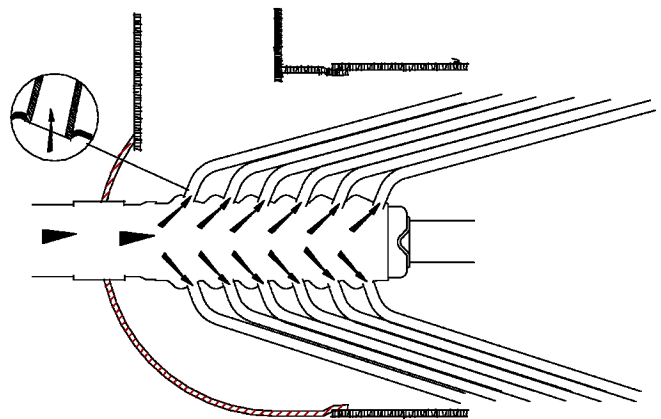


Efficient and Precise:

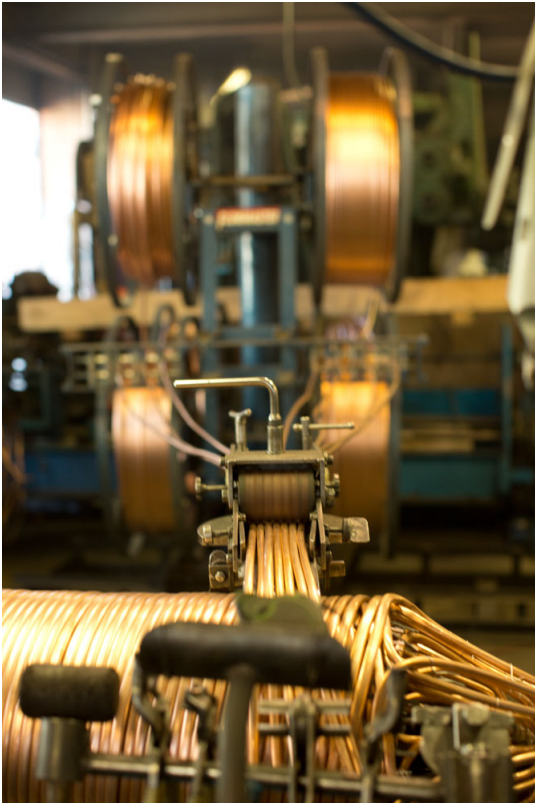
The design of the collection chamber, and the angle of the tubes results in a low flow rate and less resistance where the water enters the tube. This means less erosion. However, as the tube changes from round to oval, there is a 50% increase in flow rate at the point of heat exchange.

Designed to Last

The connection of the tubes to the chamber and of the coil to the head provide a large, strong silver solder area (15% silver used Cu-Cu and 45% used Cu-Steel). The coil design allows expansion and contraction to occur in the coil and minimizes any stress at these connective points.



Elge Flow-Through Design



Coil Design is Reliable, Self-Cleaning

ELGE®'s coil design eliminates stress at the connection points due to expansion and contraction. In addition, this movement causes the coil to be self-cleaning. Scale is automatically removed and can be easily flushed from the system through the flush valve on the bottom of the Steam Water Heater.

Efficient and Economical

ELGE®'s Model A/AR Water Heater is efficient in both space and performance. Its vertical design requires less than 4 square feet. ELGE's use of proven components provides a reliable yet economical package.

Eliminates Storage Tank Hazards

Expensive, space-hog storage tanks can be eliminated or their size minimized by using an instantaneous ELGE® Steam Water Heater.

Storage tanks are a breeding ground for corrosion-causing bacteria and hazardous bacteria such as legionella, etc. Stratified tanks can supply the ideal breeding temperature for any type of water borne bacteria.

