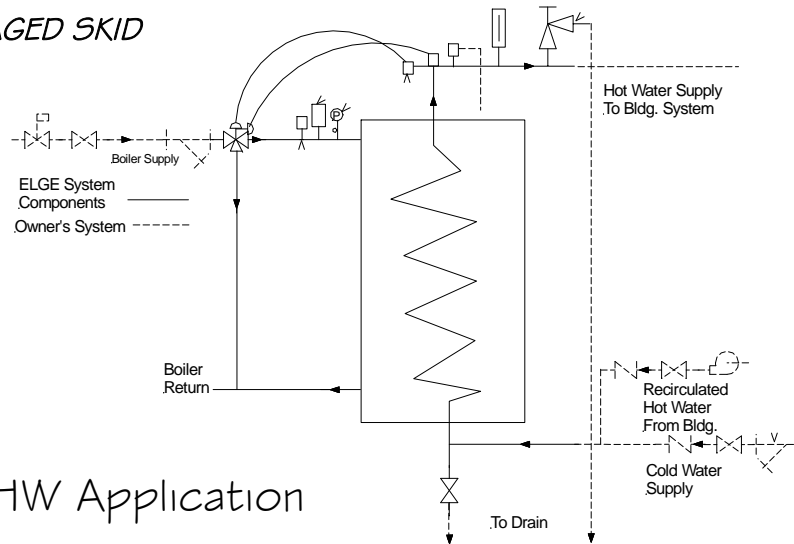
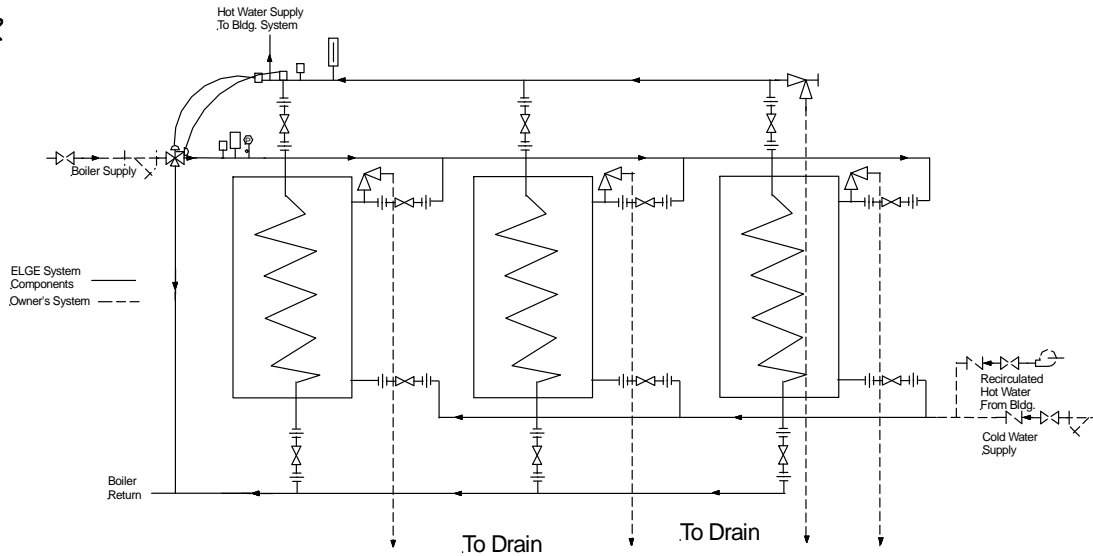


SINGLE PACKAGED SKID

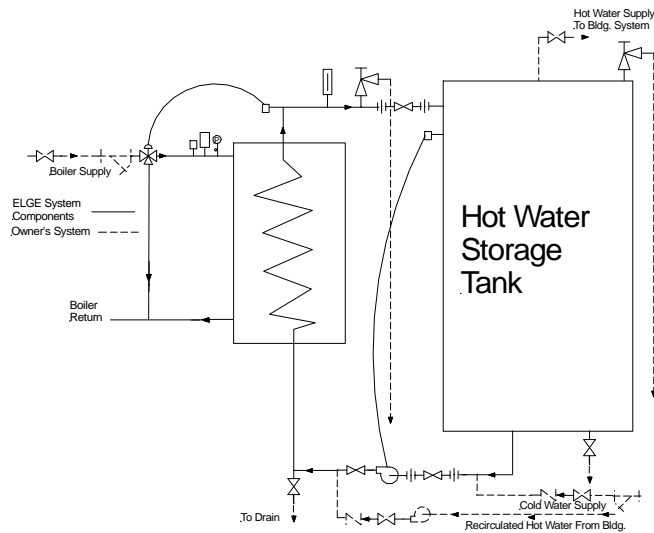


* Domestic HW Application

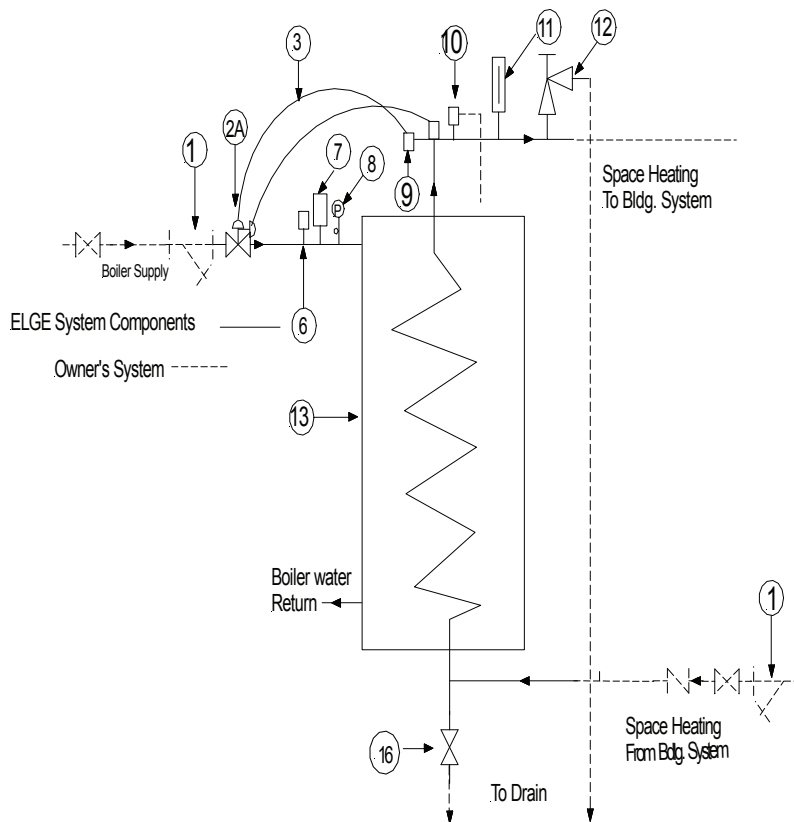
MODULAR



HEATEX TANK



Operational Component Schematics



ELGE System Components

1. Strainer (by others)
2. Self-Actuated Temperature Control Valve
3. Capillary
4. N/A
5. 3-way Solenoid Valve—24 volt
6. Vacuum breaker (if required)
7. Air Vent (if required)
8. Temperature Gauge
9. Temperature Sensor
10. Optional Overheat Protection Sensor
11. Thermometer
12. Temperature and Pressure Relief
13. ELGE Heat Exchanger
14. NA
15. NA
16. Drain Valve

*Space Heating Application

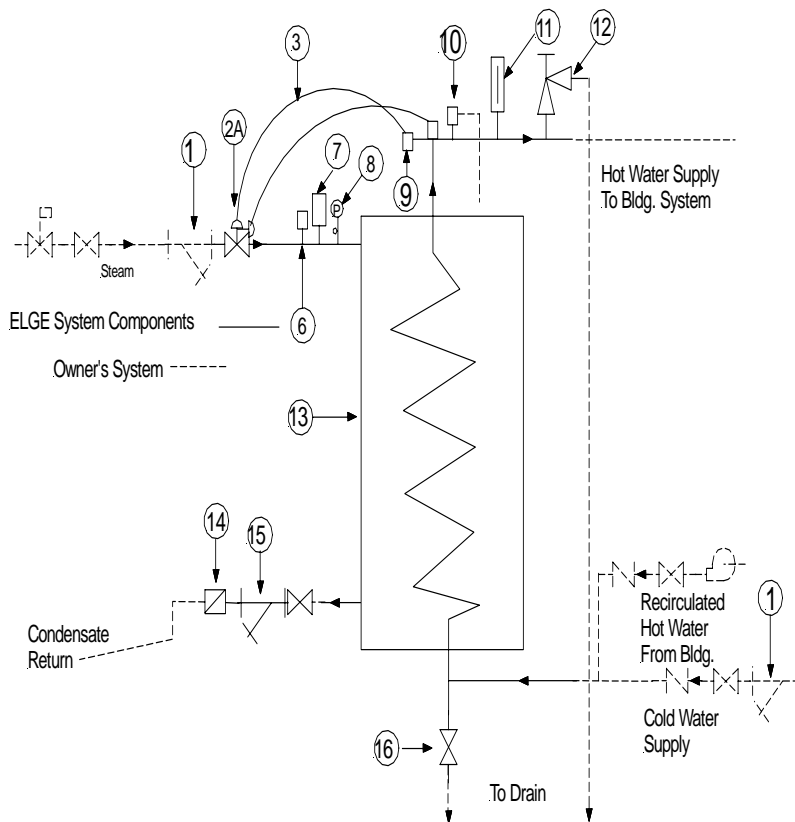
Installation Conditions

- Using the lowest possible supply temperature will reduce fouling and maintenance circulating pump is required on the domestic water loop
- System must be installed upright
- Condensation return must be drained to atmospheric pressure
- Strainer on water inlet to protect coil.

Normal Maintenance

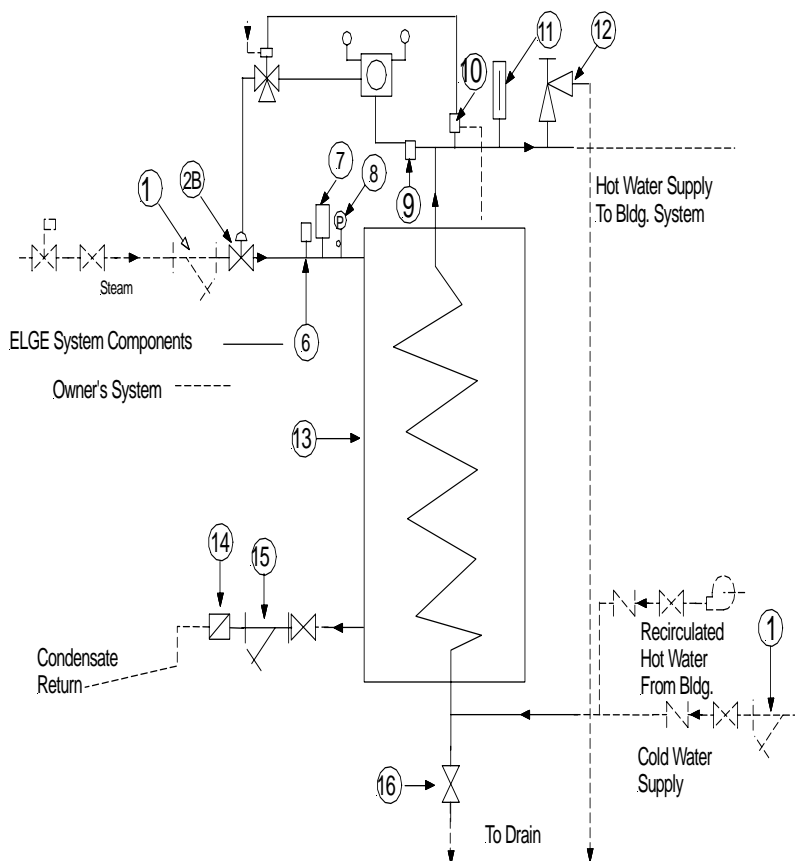
- Flush strainers and coil drain valve on a regular basis—backflush periodically
- Monitor temperature and pressure for signs of fouling, chemically flush

Typical Steam Schematics



ELGE System Components

1. Strainer (by others)
- 2a. Self-Actuated Temperature Control Valve
- 2b. Pneumatic Temperature Control Valve
3. Overheat Protection Actuator (Self Contained valve only)
4. Pneumatic Controller
5. 3-way Solenoid Valve—24 volt
6. Vacuum breaker (if required)
7. Air Vent (if required)
8. Pressure Gauge
9. Temperature Sensor
10. Optional Overheat Protection Blow down
11. Thermometer
12. Temperature and Pressure Relief Valve
13. ELGE Heat Exchanger
14. Steam Trap
15. Y Strainer
16. Drain Valve



Installation Conditions

- Using the lowest possible supply temperature will reduce fouling and maintenance
- circulating pump is required on the domestic water loop
- System must be installed upright
- Condensation return must be drained to atmospheric pressure
- Strainer on water inlet to protect coil.

Normal Maintenance

- Flush strainers and coil drain valve on a regular basis—back flush periodically
- Monitor temperature and pressure for signs of fouling, chemically flush as indicated